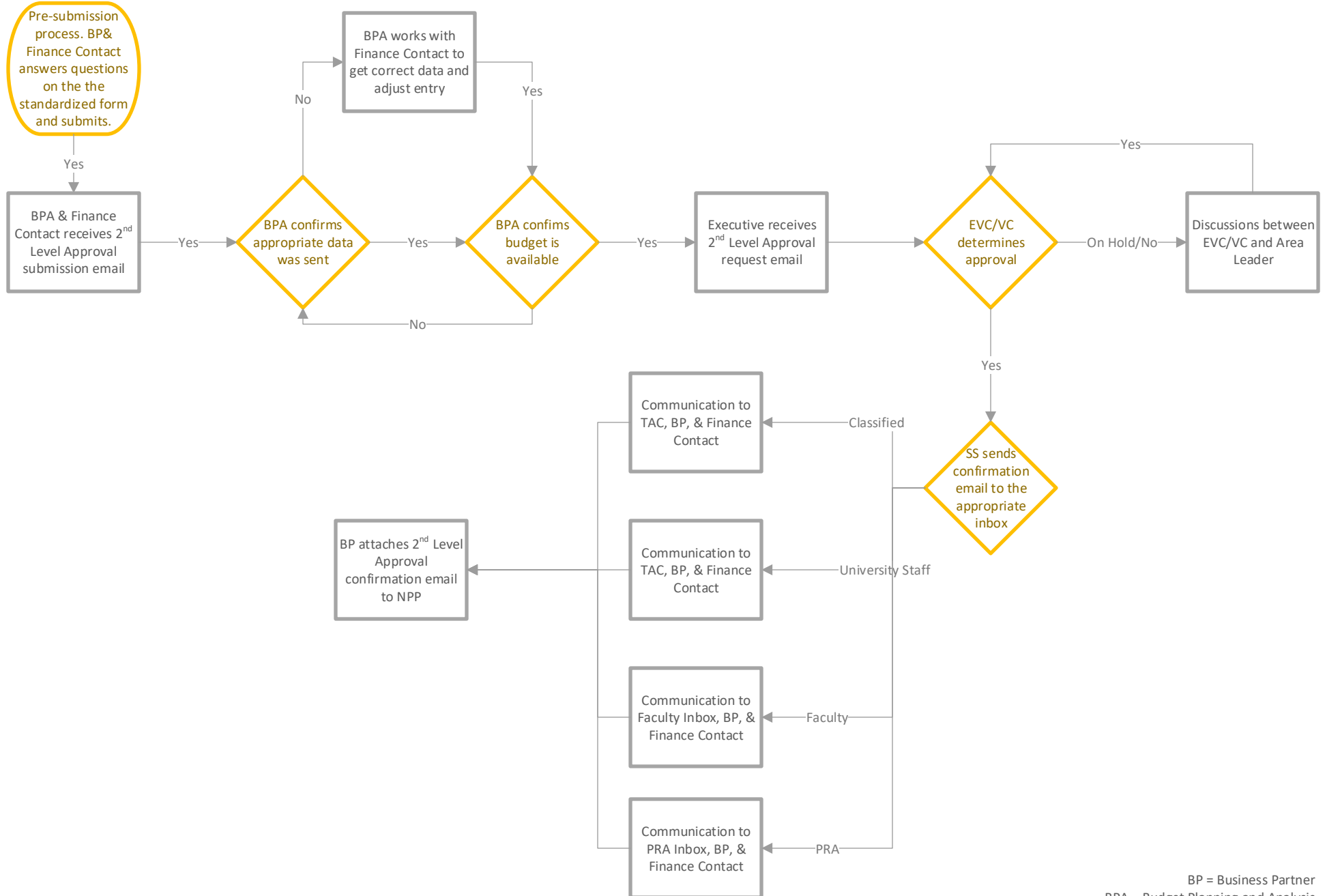


# Anschutz Administration, Finance Dept, Chancellor's Dept, CSA, Health Affairs, and Research

\*\* All positions funded fully or partially by funds 10, 11 or 36 need 2nd level budget approval\*\*

## New Positions & Promotions



BP = Business Partner  
 BPA = Budget Planning and Analysis  
 EVC = Executive Vice Chancellor  
 VC = Vice Chancellor