



How to use RSS web parts in SharePoint 2010

What is RSS?

“RSS stands for Really Simple Syndication”, according to [PressFeed](#). You can think of RSS, a web feed, as your own personal news service. In the old days, reporters for the Associated Press (AP) would submit articles from all over the globe. As a subscriber to the AP wire, you could access all these stories and use them in your publication. That’s the syndication part. PressFeed goes on to explain syndication as: “One party creates content that is published in many places. The benefit of syndication is that you get a much wider audience for your content. On the web you create content for your website or newsletter and with an RSS feed you can syndicate it to news aggregator websites or other sites that publish similar content.”

Example

An example of an RSS feed can be seen on the [Business School](#) site.

In your web site, you can provide or subscribe to an RSS feed. For instance, a web feed could be used to deliver your content—job vacancies, scholarships, news, announcements, etc.

There are two types of feeds:

- **Partial feeds** include a headline, a short summary of the content and a link back to the place where the content resides.
- **Full feeds** load the entire article into the visitors’ news reader—meaning they don’t have to go to another web site to view content.

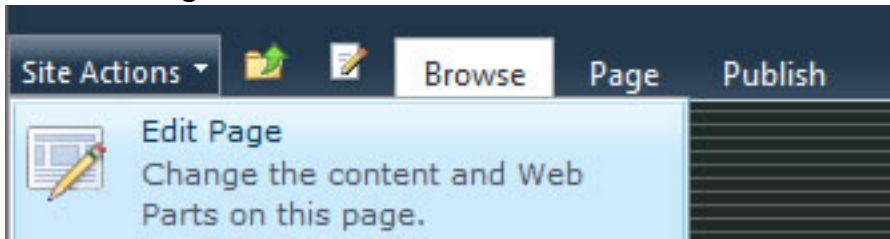
Internet Explorer 6 Note: In SharePoint 2010 RSS feeds are not supported in Internet Explorer 6. If you need to support RSS content for IE6, make sure you add a link to the original RSS site so that IE6 visitors can find the content directly.

RSS is built-in to content management systems like SharePoint 2010. To add an RSS feed to your site follow the steps in this section.

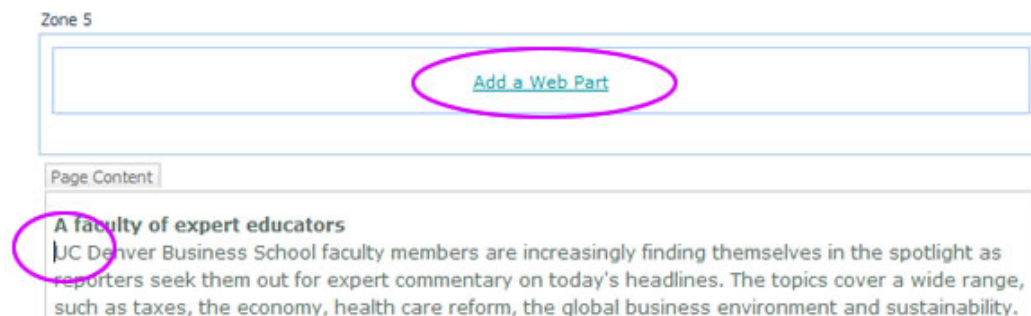
Add an RSS Feed to Your Page

Use the **RSS Viewer Web Part** to display RSS feeds on your page.

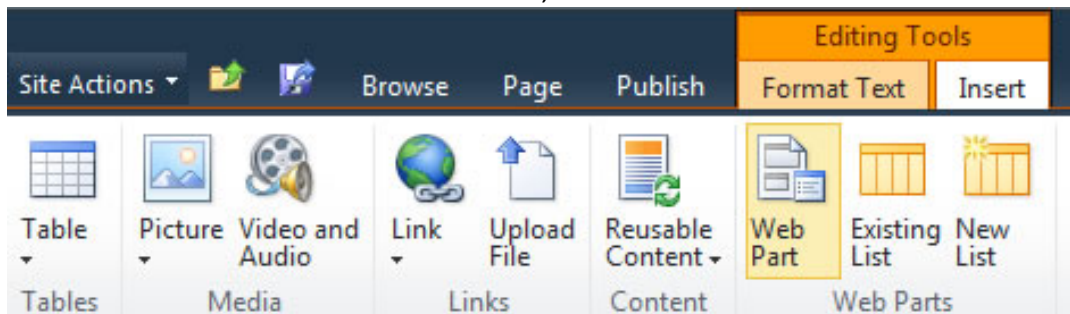
1. Navigate to the page where you would like an **RSS Viewer Web Part** to appear.
2. Select **Edit Page** under the **Site Actions** menu.



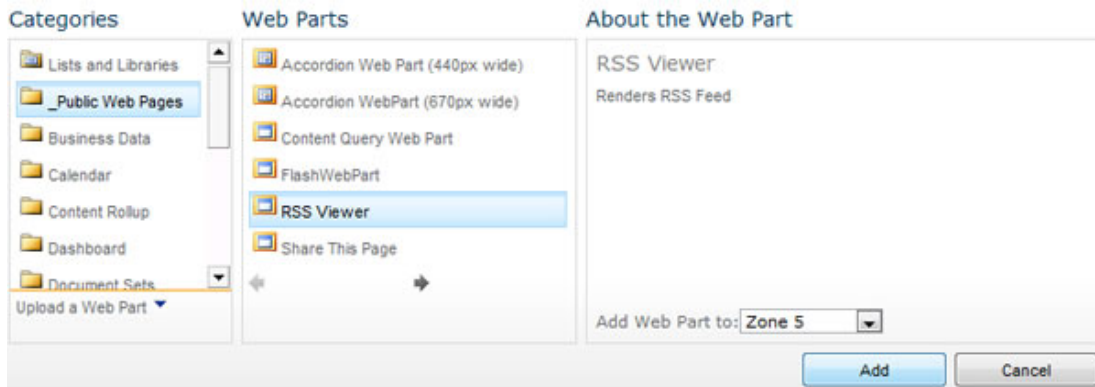
3. To insert a web part, choose **Add a Web Part** from one of the web part zones on the page, or place your cursor in a content area.



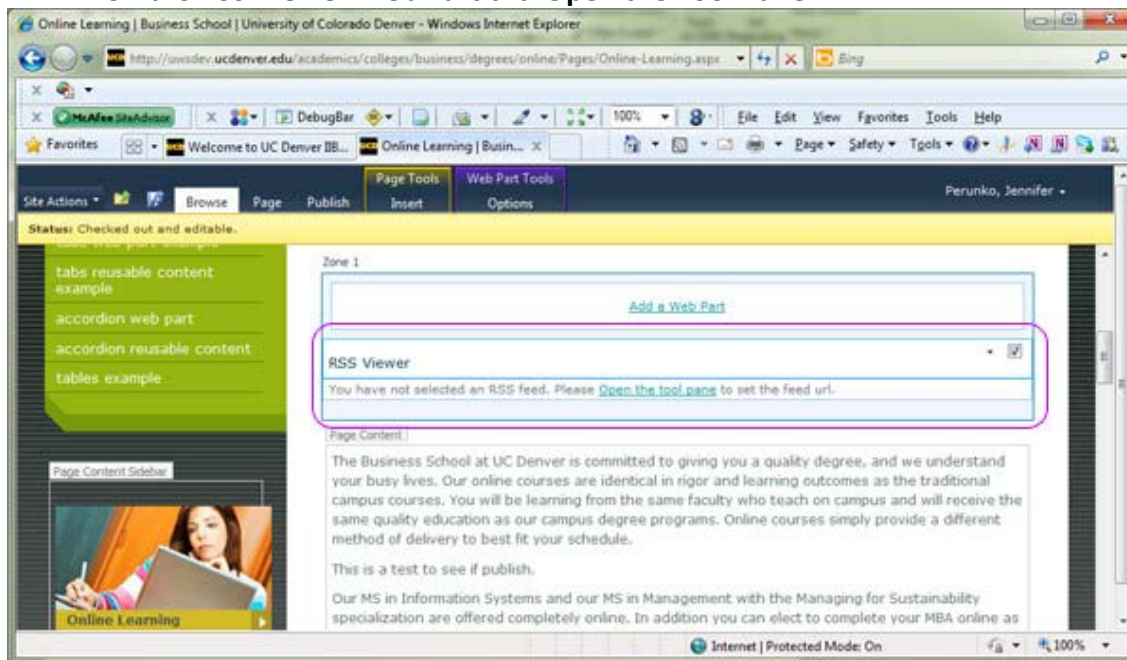
4. Select the **Insert** tab in the ribbon, select the **Web Part** button.



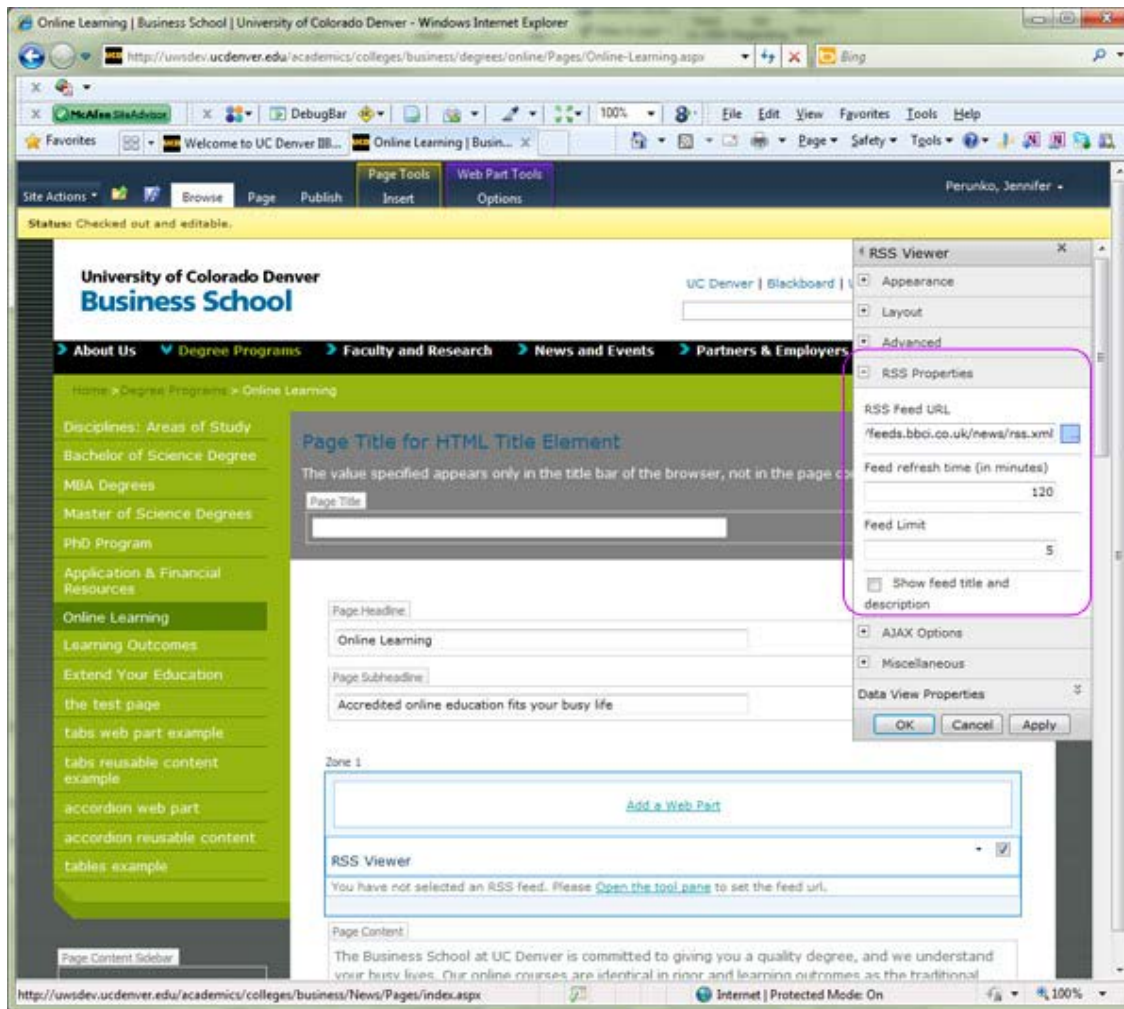
5. The web part gallery will open underneath the ribbon. The web part gallery shows the categories, web parts, and a description of the selected web part.
6. Choose the **_Public Web Pages** category and the **RSS Viewer Web Part**. Click **Add**.



7. On the **RSS Viewer Web Part** click **Open the Tool Pane**



8. In the **RSS Viewer** window paste the address to an RSS feed into the **RSS Feed URL** field of the web part. (ex <http://feeds.bbc.co.uk/news/rss.xml>)



9. Experiment with the **AJAX** or **Misc** options of the web part to use other features.
10. Select **OK** to apply changes.
11. Your RSS feed will appear on your page.
12. When you are done making adjustments, **Check In**, **Save and Close**, or **Publish** your page.

